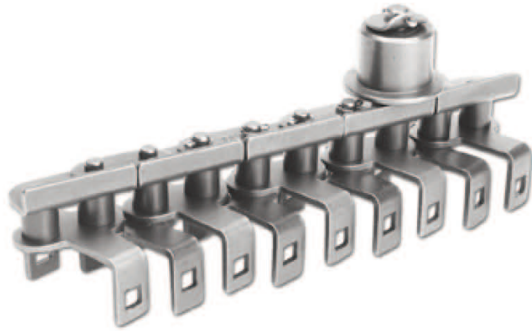


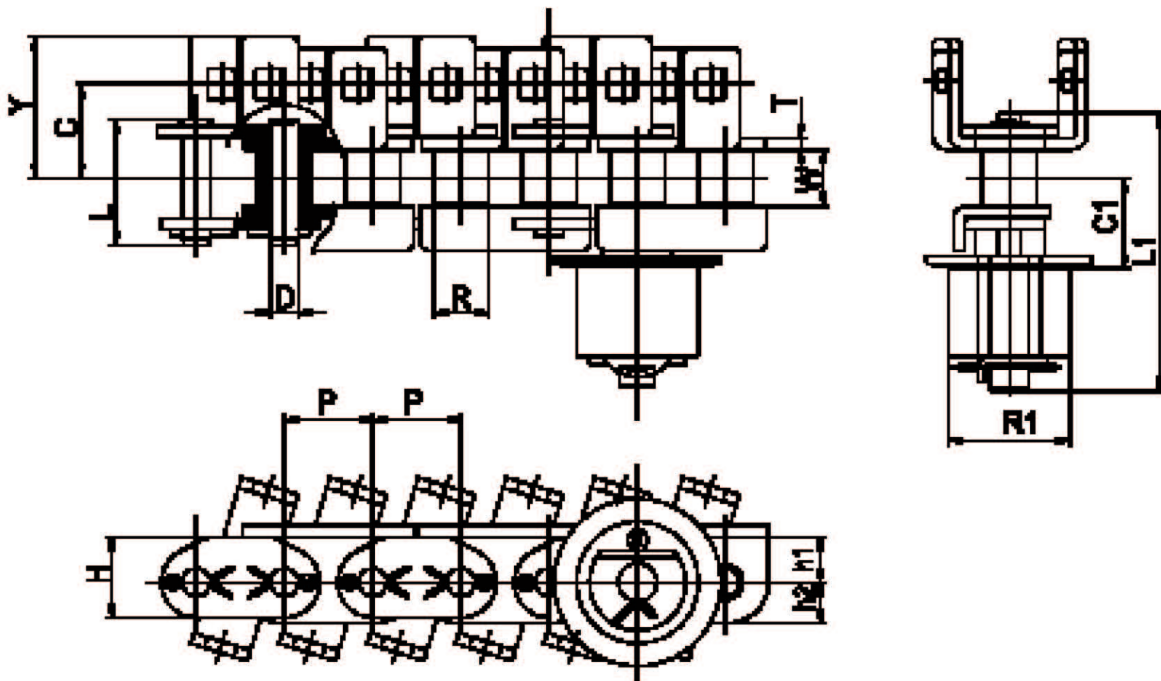
## Wicket Chain

### 위켓트 체인



Dong Bo Wicket Chain is a no back bend type chain that is used for effective conveyance of printed thin steel plates. As a part of steel can manufacturing, it is attached in two parallel rows to the drying duct for the continuous drying process of printed thin steel plates. One of its characteristics is that special carbon bush is used for side rollers.

동보 위켓트체인은 제관 공정중의 일부인, 인쇄된 제관용 금속판의 연속 건조를 위한 건조로에 2열로 나란히 장착되어 금속판의 효율적 이송에 사용되어지는 NO BACK BEND TYPE의 체인이며, 특히 사이드 로울러에는 특수 카본 부시가 사용됨이 특징입니다.



unit : mm

DONG BO Chain No.	Pitch P	Roller Dia R	Side Roller Dia R	Inner Width W	Plate				Pin			Attachment		
					T	H	h1	h2	D	L	L1	C	C1	Y
DBCWK80	25.4	15.88	35.0	15.88	3.2	23.3	13.1	11.7	7.94	35.8	79.8	27.0	25.7	40.7