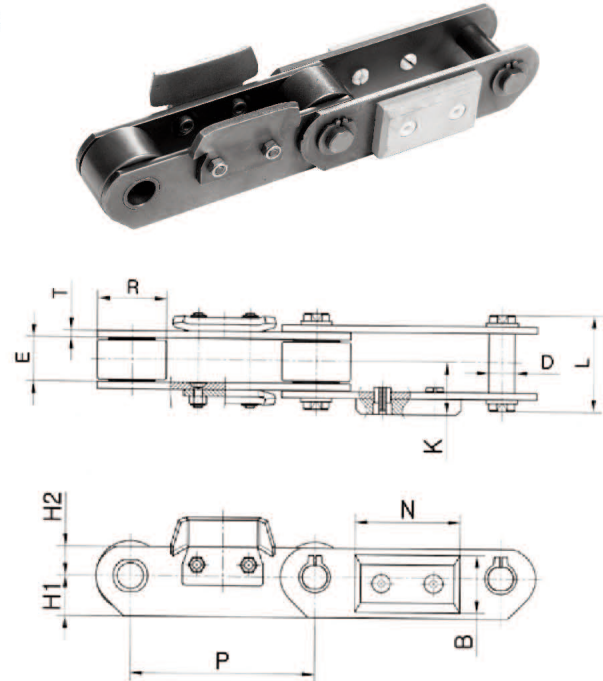


Skid Chain for Automobile Assembly Line 스키드 체인 (자동차 조립 라인용)

It is mainly used for automobile painting and manufacturing lines.

It has excellent precision and can withstand much impact, corrosion and abrasion. You can attach various attachments according to applications.

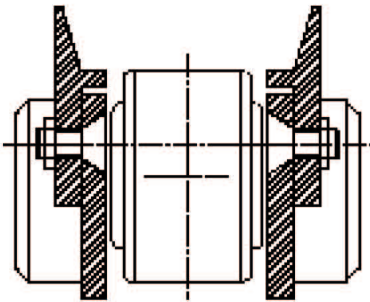
자동차 도장, 조립라인 등에 주로 사용되어지고 있습니다.
정밀도, 내충격성, 내부식성, 내마모성이 우수합니다.
용도에 따라 다양한 어태치먼트를 부착할 수 있습니다.



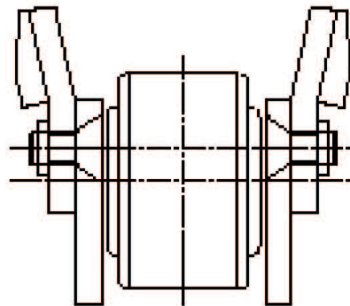
unit : mm

DONG BO Chain No.	Pitch P	Roller		Inner Width W	Plate			Pin		Attachment			Avg. Breaking Load(kgf)
		R	E		T	H ₁	H ₂	D	L	K	N	B	
DBC SKD 160	160	60	35	38	6	25	35	22	83	45	90	50	22.000

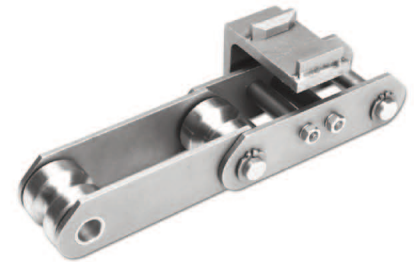
Application of Attachment 용도별 어태치먼트의 예



For Suspension
서스펜션용



For Buffer
버퍼용



For Booth
부스용

