

Escalator Chains

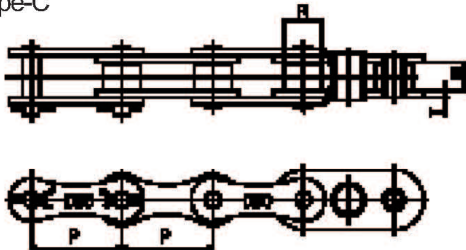
에스컬레이터용 체인

Escalators need a high-precision conveyor chain for stability and safety. Our Escalator Step Chain is specially designed so that riders feel almost no vibration or noise.

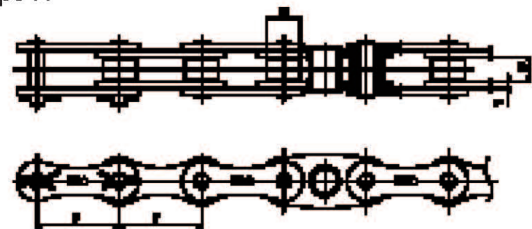
에스컬레이터는 안정성과 안정도를 높이기 위하여 정밀도가 높은 컨베이어 체인을 필요로 합니다. 당사의 에스컬레이터용 스텝체인 (Step Chain)은 탑승자가 진동이나 소음을 거의 느낄 수 없도록 특수설계되어 있습니다.



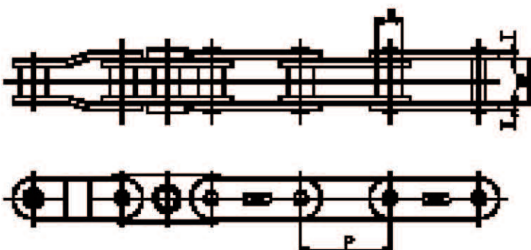
Type-C



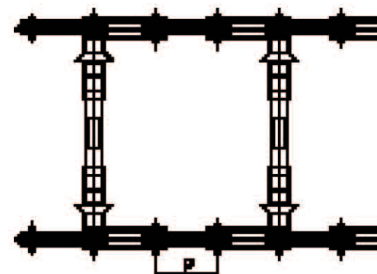
Type-H



Type-N



Type-A (Axle type)



DONG BO Chain No.	Type	Pitch P	Roller Dia R	Inner Width W	Breaking Load (kgf)	Weight (kg/m)
DBC C-8T	C	68.4	32	21	8,300	
DBC C-10T					10,000	
DBC C-13T				13,000		
DBC C-16S				16,000		
DBC I-6	H	67.73	28	15.7	6,000	3.40
DBC I-9				25.4	9,000	5.17
DBC I-14				25.4	14,000	5.17
DBC F-9		67.6	25.4	20.6	9,000	5.18
DBC F-14				20.6	14,000	5.18
DBC G-9				20.6	9,000	4.00
DBC 38-N	N	81.28	31.75	31.4	127,000	9.01
DBC 38-NH					20,400	
DBC 32	A	135.467	76.5	22.5	12,300	
DBC 40						
DBC 48						
DBC 32-S		50.8				
DBC 48-S						